

Security Deposit

\$1,500 - Paid at the time the agreement is signed for either one or two bedroom apartments. The security deposit is refundable, but Crown Pointe reserves the right to withhold and use all or a portion of the deposit for needed repairs, re-painting, or cleaning when an apartment is vacated by tenant(s).

Basic Care Services Rate (\$2,500 per month per occupant)

For the best in senior living and the assurance of a helping hand nearby, Crown Pointe offers the availability of services and care designed to enhance your independence and living comfort. Assisted living basic care services includes:

- Shower (twice weekly)
- Daily personal care
- Daily dressing assist
- Weekly laundry service (personal & linens)
- Weekly apartment cleaning
- 3 meals a day
- Escort to or from dining room
- Assistive device cleaning (hearing aids, walker, etc.)
- 24 hour staff on duty
- Scheduling assistance for public transportation services
- Prompting & supervision of laundry facilities
- Interior & exterior public maintenance
- Access & use of all common area
- Secured building
- Social & recreational events
- Maintenance of furnished appliances
- Health checks monthly (vital signs, weight)
- Initial assessment (every 90 days)
- Emergency response system
- Annual apartment cleaning
- Notations from physician
- Use of all common areas
- All utilities (except telephone, cable, internet provided)
- Activities

Monthly Rental Rates

- Studio - \$765 per month
- 1 bedroom - \$1,100 per month
- 1 bedroom deluxe - \$1,200 per month
- Double occupant as independent - \$870 per month

Extra Care Services (additional charge)

- Medication management - \$250
- Medication set up
- Extra showers or grooming
- Dressing or oral care by choice
- Additional cleaning environment (shower, hygiene-essential)

*Prices, terms, conditions, and benefits are subject to change without notice.

Security Deposit

\$1,500 - Paid at the time the agreement is signed for either one or two bedroom apartments. The security deposit is refundable but Crown Pointe reserves the right to withhold and use all or a portion of the deposit for needed repairs, re-painting, or cleaning when an apartment is vacated by tenant(s).

Monthly Residency Fee

Paid monthly in advance and on the tenth of each month (first month fees pro-rated on occupancy date). The lease agreement is on a simple month-to-month basis and does not require a buy-in or up-front fee. The monthly residency fee includes:

- All utilities (except telephone, cable, internet provided)
- Daily noon meal
- Emergency call system in every home
- Trash removal
- All common interior & exterior area maintenance
- Furnished appliance maintenance
- Washer & dryer hookups
- Access to all Crown Pointe common areas & amenities
- Individual indoor mail boxes
- Priority access to assisted living & nursing home facilities

In order to serve you best, a health assessment will be conducted prior to enrollment.

Monthly Rental Rates (based upon the size of the apartment)

- 1 bedroom - \$2,000 per month
- 2 bedroom - \$2,480 per month
- Double occupancy - \$250 per month

Upon availability, an underground parking space may be leased for \$50 per month. Storage space is available upon request.

Additional Features

- Fully equipped kitchen with furnished stove & fridge
- Individually controlled heating & air conditioning
- Large closets
- Fire & sound-resistant construction
- Beauty salon or barber shop
- Library & computer room
- 4-season sun porches
- Activities room
- Large gathering room
- Guest room
- Paved walking trail
- Centrally located elevator
- After hours security system
- Fire & smoke alarm system
- Convenient parking for guests
- Spacious lobby & sitting area
- 24 hour staff on duty
- Transportation (RIDES) available
- On-site worship services
- Snack shop
- Front & back outside patio
- Garden

*Prices, terms, conditions, and benefits are subject to change without notice.

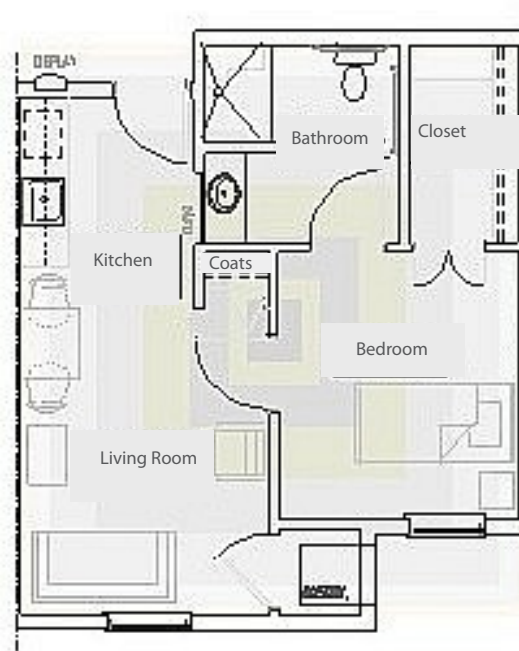
Crown Pointe Assisted Living - Apartment Floor Plans

Studio apartment (385 sq ft)



- Living Room
8'6" x 14'6"
- Kitchen
7'3" x 7'1"
- Bedroom
9'2" x 7'9"
- Closet
7'5" x 3'6"
- Bathroom
8'7" x 5'

1 bedroom apartment (492 sq ft)



- Living Room
10'5" x 14'6"
- Kitchen
7'3" x 7'1"
- Bedroom
10'1" x 11'2"
- Closet
4'8" x 8'3"
- Bathroom
8'2" x 8'3"

**1 bedroom deluxe apartment
(609 sq ft)**



- Living Room
12'7" x 12'
- Kitchen
12'7" x 6'9"
- Bedroom
13'6" x 11'6"
- Closet
5' x 7'10"
- Bathroom
8'2" x 7'10"

Crown Pointe Independent Living - Apartment Floor Plans

1 bedroom apartment (629 sq ft)



Living Room
13'7" x 12'

Kitchen
12'6" x 9'

Bedroom
12'7" x 10'8"

Closet
8' x 9'

Bathroom
8'4" x 9'

2 bedroom apartment (859 sq ft)



Living Room
13'9" x 12'1"

Kitchen
12'7" x 7'

Bedroom 1
12'7" x 10'6"

Bedroom 2
9'6" x 12'3"

Closet
8' x 9'

Bathroom 1
8'4" x 9'

Bathroom 2
9'4" x 8'7"

Independent Living - Main Level Plan

